

Rochana

**IT Infrastructure Services
Kiosk & Signages
Software Services**



Rochana

Rochana

**IT Infrastructure Services
Kiosk & Signages**



Rochana

Rochana

IT Infrastructure Services



Rochana



Table of Contents

|01 IT Infrastructure Services

|02 Kiosk & Signages



Table of Contents

|01 IT Infrastructure Services

|02 Kiosk & Signages

|03 Software Services

About our services





IT Infrastructure Services



From legacy architecture to new and emerging technologies, we have the expertise in IT infrastructure solution and service to take you from planning and design through product purchase, implementation, systems integration, and post-implementation support.

Over 20 years of IT experience in hospitality industry working with big international brands (Hilton, Marriott, Como & Radisson) & home-grown brands, we have started our journey working on projects with different owning companies & brands. We support the traditional structured cabling to the latest trend of EPON / GPON.

We cater the below industries.

- Hotels & Resorts.
- Warehouse.
- Manufacturing.
- Information Technology.
- Construction.

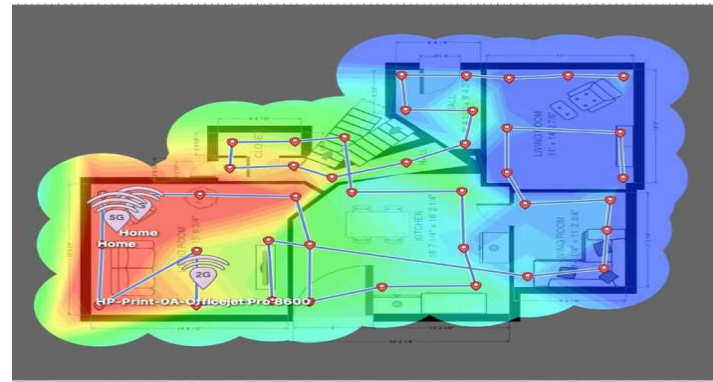
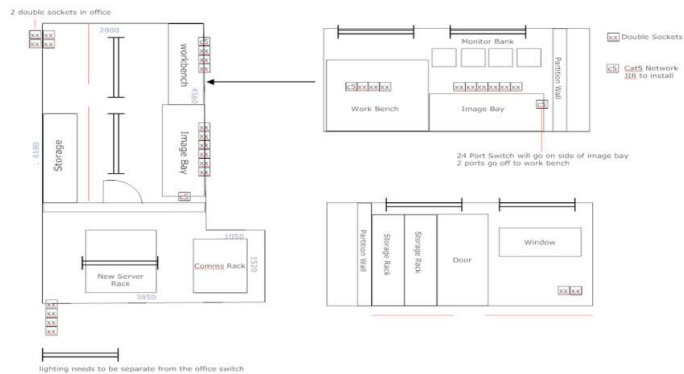


Our Services - Infrastructure



Here's an assortment of our services.

- Complex Network Design.
- Structured Data & Voice Cabling.
- OTDR & Fluke Testing.
- Firewall, Core & Access Switch configuration.
- Wi-Fi Infrastructure survey & implementation.
- DR Site design & implementation.
- EPABX Implementation.
- Server & UPS Room Design.
- Green Computing Solution.
- Virtualization - VMware vSphere.
- CCTV Camera survey & Implementation.

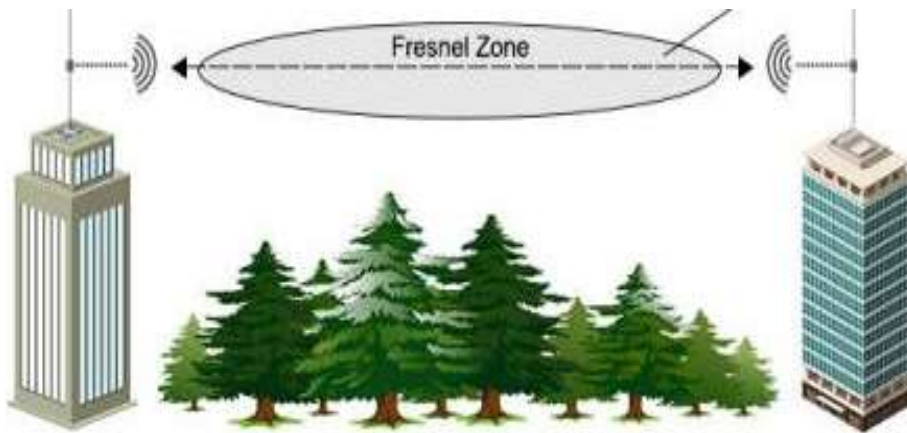


Our Services - Infrastructure

- Wi-Fi Solution
- Voice Network - EPBX
- CCTV Solution
- Optical Fiber Networking



Our Services - Infrastructure




Our Services - Infrastructure

Trueview®
True Security Systems

4G Solar Bullet Camera

24x7 Surveillance from Anywhere, Anytime



4MP Resolution
256GB SD Card
Human Detection
5W Solar Panel
Alarm Push Notification
All Time Color
Full Duplex Audio Intercom
10X Digital Zoom

www.trueview.co.in

IMPACT
by Honeywell

UNCOMPROMISING SURVEILLANCE PROUDLY MADE IN INDIA

Implement state-of-the-art security with locally manufactured products



I-HIE2PI-EL
I-HIE4PI-EL*

I-HIB2PI-EL
I-HIB4PI-EL*

I-HNVR-1110
I-HNVR-1120

[Impact By Honeywell IP series Cameras and NVR's]

IMPACT
by Honeywell

FEATURE-PACKED SECURITY WITH AN APP-BASED INTERFACE

IMPACT IP SERIES (2MP & 4MP)
IMPACT by Honeywell IP Series Cameras deliver high-definition image quality, with built-in audio, video storage and analytics, in multiple variants to suit diverse site requirements.




VCA - Tripwire/Perimeter Protection
IH+265 Video Compression
WDR Video Enhancement

HD Video Quality
Built-In Mic
SD Card Storage Up To 512 GB

Our Services - Infrastructure

IMPACT
by Honeywell

FEATURE RICH SURVEILLANCE AT BUDGET FRIENDLY PRICES



Presenting
Ultra-Lite Series Cameras

High Quality Surveillance with In-Built Audio

The Impact by Honeywell Ultra Lite Series offers 2MP Dome and Bullet Cameras. With a superior IR range, built-in mic, and IH+265 compression, this series delivers enhanced surveillance; with onsite audio, faster streaming, and effective performance in low ambient light.

CCTV RANGE

AHD RANGE (2MP & 5MP + IMPACT DVRs)

The IMPACT by Honeywell AHD range offers high resolution surveillance that is compatible with legacy infrastructure, while delivering state of the art capabilities.



KEY FEATURES

Crystal clear images	Digital Noise Reduction
Indoor and outdoor friendly	Auto WB
Diverse variants	

Note: All models do not support this, please refer to the detailed specifications.

CCTV RANGE

I-HADC-2PI-L 2MP Fixed Dome IR Range up to 25M Lens 3.6MM & OSD cable Plastic + Metal Housing	I-HADC-2PI-LA 2MP Fixed Dome with Built-in Audio IR Range up to 25M Lens 3.6MM & OSD cable Plastic + Metal Housing	I-HADC-2PI-LC 2MP Fixed Dome with Built-in audio & Color vision IR Range up to 25M Lens 3.6MM & OSD cable Plastic + Metal Housing
I-HADC-2PIV 2MP Varifocal Dome IR Range up to 30M Lens 2.8-12 MM & OSD cable Metal Housing	I-HADC-SPI-L 5MP Fixed Dome IR Range up to 25M Lens 3.6MM & OSD cable Plastic + Metal Housing	I-HADC-SPI-LA 5MP Fixed Dome with Built-in Audio IR Range up to 25M Lens 3.6MM & OSD cable Plastic + Metal Housing

Security and Protection Range | [www.honeywell.com/impact](#)

CCTV RANGE

I-HADC-SPI-LC 5MP Fixed Dome with built-in audio & Color vision IR Range up to 25M Lens 3.6MM & OSD cable Plastic + Metal Housing	I-HADC-2PI-L 2MP Fixed Bullet IR Range up to 25M Lens 3.6MM & OSD cable Plastic + Metal Housing	I-HADC-2PI-LA 2MP Fixed Bullet with Built-in Audio IR Range up to 25M Lens 3.6MM & OSD cable Plastic + Metal Housing
I-HADC-2PI-LC 2MP Fixed Bullet with built-in audio & Color vision IR Range up to 25M Lens 3.6MM & OSD cable Plastic + Metal Housing	I-HADC-2PIV 2MP Varifocal Bullet IR Range up to 60M Lens 2.8-12 MM & OSD cable Metal Housing	I-HADC-SPI-L 5MP Fixed Bullet IR Range up to 25M Lens 3.6MM & OSD cable Plastic + Metal Housing

Security and Protection Range | [www.honeywell.com/impact](#)


CCTV RANGE

I-HADC-SPI-LA 5MP Fixed Bullet with Built-in Audio IR Range up to 25M Lens 3.6MM & OSD cable Plastic + Metal Housing	I-HADC-SPI-LC 5MP Fixed Bullet with built-in audio & Color vision IR Range up to 25M Lens 3.6MM & OSD cable Plastic + Metal Housing
---	--

Security and Protection Range | [www.honeywell.com/impact](#)

SMART SOLUTIONS FOR SECURE & SUSTAINABLE LIVING

Reliable, Customer-Centric, and Proactive solutions for safety and energy efficiency



IMPACT
by Honeywell

Our Services - Infrastructure



Trueview®

NEW PRODUCT UPDATE

Introducing

4MP WiFi Solar Mini PT Camera

The Power of Solar
The ease of Wi-Fi

works with alexa

www.trueview.co.in



IMPACT
by Honeywell

A VIBRANT EYE TO GUARD THE DARK

4MP Fixed Ultra Lite Colour Vision Camera

The economically priced Ultra Light Vision Camera features superior IR range to ensure enhanced surveillance even in low ambient lights.

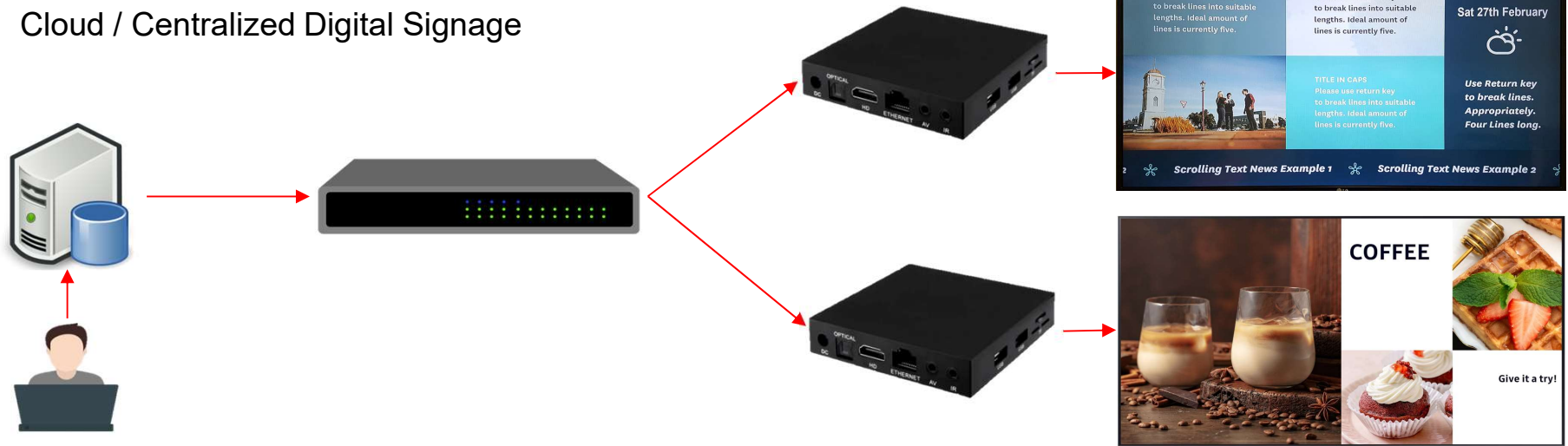
- HD Up to 2688x1520 @25fps
- 2 Warm lights, 15m
- Built in mic
- Polycarbonate Housing
- IR Range 30m (Dome) and 50m (Bullet)

For more information,
enquiry.mms@honeywell.com www.honeywellbuildings.in



Our Services – Digital Signages

Cloud / Centralized Digital Signage



Elevate your brand's visibility with cutting-edge cloud-based Digital Signage solution. Seamlessly manage and display captivating content across multiple screens from anywhere, anytime. Boost engagement, drive sales, and leave a lasting impression on your audience with dynamic visuals that stand out in today's digital world. It's time to revolutionize how you communicate - effortlessly and effectively with Digital Signages.

Our Services – Kiosk & Digital Standees

Information kiosks have long been a staple in public spaces like

- Airports
- Shopping Malls
- Museums
- Hotel Lobby's
- Company Receptions

However, with the advent of digital signage, these kiosks have transformed into dynamic and interactive platforms that captivate viewers and deliver targeted messages.



Our Services - Virtual IT Manager

We (Virtual IT Manager) work internally with cross functional support teams and act as the IT Manager for small to mid-scale network technology used by our clients.

We take care of technology alignments following company standards, best practices, processes, and procedures to keep the client operating at its highest efficiency.

We support Microsoft O365 & Google Workspace for setup & maintenance.

Coordinate with ERP vendors & support clients on day to day activities.





Software Services

- Learning Management System
- Self Serve Kiosk – Citron POS
- ERP for Manufacturing Industry– Under Development
- Visitor Management System – Under Development
- Feedback & Survey System – Under Development
- Complaint Management System - Under Development

Software Services

Citron POS focus on Human – Machine Interactive Technologies & strive to provide our customers with high standards of user experience while using our products, bringing in human data analytics and other automated services to strengthen their businesses and better perform in Digital process.

- Customizable Reports
- Helps in Upselling
- Helps in improving Brand Standards
- Single software for kiosk & cash counter*
- KOT Enabled*
- Reduces load on cashiers
- Reduces Malpractice
- Reduces Manpower
- Inventory Management*

 **PhonePe** Payment Gateway Integrated

CITRON
POINT OF SALE



Software Services

Citron Food Ordering Options



Citron POS

CITRON
POINT OF SALE



Self Ordering from Kiosk



Ordering from Laptop



Cash Counter



Ordering from Phone 20

Software Services

Citron Inventory Management

- Cloud Kitchen / Multi store / Outlet Indent
- Quotations – Vendors Directly uploads the quotes
- Comparative / Contracts
- PO generated
- GRN
- Kitchen
- Food gets Prepared
- Outward Prepared
- QR code on boxes/ packages in inventory
- Product is issued to store / Outlet
- Wastage is entered
- Reports



OEM's we work with

idsnext

 WINHMS
Hospitality Management Software

Unity

 VingCard

EPSON®
EXCEED YOUR VISION

POSWAY®

syRotech®
NETWORKS

NET
Link

OptiLink
ENGINE FOR YOUR BUSINESS

 eGlu

TATA POWER
EZ HOME



Smart Node
Discover the Joy of Smart Living

OEM's we work with





“This is a quote, words full of wisdom that someone important said and can make the reader get inspired.”

—SOMEONE FAMOUS



Thanks!

Do you have any questions?

Write us to

hello@rochanasolutions.com

+91 82965 42595

muralidhar@rochanasolutions.com

+91 98454 42070

www.rochanasolutions.com

#186, 3rd cross, CKS, HG Road, Bangalore,
Karnataka – 560 057

